

" 8 Short Songs " (1995)

Hans Roels

PIANO

→ The performers can choose any order for the different songs

→ the following notes should be prepared:

♩ b_{\pm} - a bolt on the place of the 3rd overtone (b_{\pm}) and rubber (between snares 1-2 and 2-3) ± 10 cm behind this bolt

♩ b_{\pm} } snares 1-2 } rubber at ± 3 cm from the bridge
 " 2-3 }

♩ $+$ snares 1-2: rubber in the middle of the snare (on the place of the 1st overtone)

♩ b_{\pm} } snares 1-2: screw on the place of the 7th overtone (b_{\pm}) } this should produce a soft tone
 snares 2-3: ± 10 cm behind the first screw

♩ \bullet } snares 1-2: long bolt with 2 nuts (if the 2 nuts start to "buzz" in other pieces than "Spring Fjord", just tighten the 2 nuts)

♩ \bullet } snares 1-2: long bolt on the place of the 2nd overtone } adapt the distances a little
 snares 2-3: long bolt on the place of the 3rd overtone } dit so that the overtones sound dissonant

♩ b_{\pm} } snares 1-2: } rubber at a place where it produces a dull sound (one can also use a wooden doother-pag)
 snares 2-3: }

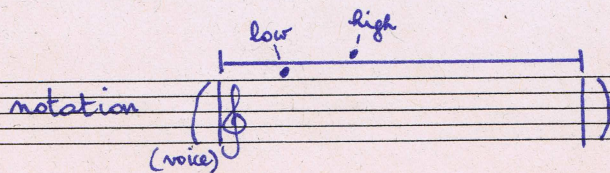
→ the b_{\pm} shouldn't sound prepared in "Trinobian mourning song"!, so take out the preparation
 or, if one plays "I am climbing" or "Spring Fjord" after this song, put it in afterwards

→ the sign + means pizzicato

" " \oplus means muted (just near the bridge) by the left hand

VOICE

= the voice (male/female) should also play on 2 temple blocks



Archaic song of Dr. Tom The Shaman

(5 = ± 96)

Handwritten musical score for the first system. The top staff is in treble clef with a key signature of one sharp (F#) and a time signature of 11/16. It contains several measures of music, including a triplet of eighth notes and a quarter note. The bottom staff is in bass clef with a key signature of one sharp (F#) and a time signature of 7/16. It contains several measures of music, including a triplet of eighth notes and a quarter note. The lyrics are: "I-I-I-I-I-I-I-I-I-I I know thee My-my-my-my-my-my-my-my-my-my".

Handwritten musical score for the second system. The top staff is in treble clef with a key signature of one sharp (F#) and a time signature of 11/16. It contains several measures of music, including a triplet of eighth notes and a quarter note. The bottom staff is in bass clef with a key signature of one sharp (F#) and a time signature of 7/16. It contains several measures of music, including a triplet of eighth notes and a quarter note. The lyrics are: "name is Tom-Tom-Tom-Tom-Tom-Tom-Tom I want to take thy sickness I know thy sickness I will take thy sickness".

Handwritten musical score for the third system. The top staff is in treble clef with a key signature of one sharp (F#) and a time signature of 11/16. It contains several measures of music, including a triplet of eighth notes and a quarter note. The bottom staff is in bass clef with a key signature of one sharp (F#) and a time signature of 7/16. It contains several measures of music, including a triplet of eighth notes and a quarter note. The lyrics are: "My-my-my-my-my-my-my-my-my-my name is Tom I-I-I-I-I-I-I-I-I-I".

p

am a strong doctor doctor doctor for *p* I take thy sickness thou wilt see thy sick-ness

mf

My name is Tom I don't lie

mf

My name is Tom

Bra

mf *mf* *p*

I don't talk shit I am a doc - tor Many days I haven't ea - ten

pp

Ten days maybe I haven't ea - ten I don't have my tools with me I don't have my sack with me My-my-my-my-my-my-my-my-my-my

p *pp*

name is Tom-Tom Tom-Tom-Tom I will take thy sickness now and thou wilt see it

Moon eclipse exercise

(♩ = ± 80-84)

(whisper) *f* *p* *f* *p* *f* *p*

come out come out come out the moon has been killed come out come out come out the moon has been killed

f *p* (sung) *molto ritenuto*

come out come out come out come out - the moon has been killed

who kills the moon? crow

mf *ppp* *pizzicato* *3va* *bbs* *+* *+* *+* *+* *+* *+*

who often kills the moon? eagle

who usually kills the moon? chickenhawk

who also kills the moon? owl

who often kills the moon? eagle

who usually kills the moon? chickenhawk

who also kills the moon? owl

in their numbers they

*1 one can also put the lowest 3 tones (la → mi) of the piano in the second pedal; lift the 2nd pedal at the end of the second line, page 2 (at the sign $\frac{2nd}{2nd}$)

*2 scratch with one finger (f.e. 2.) on the mare, while muting it with an other (f.e. 4)

only when a rich man is about to be killed is the moon murdered

look all around the world, dance, throw your sticks, help out, look at the moon

pp dark as it is now even if it disappears it will come back think of nothing

ritenuto

f *ff*

I'm going back into the house

she and the others went back

mf *molto ritenuto* *molto crescendo*

(fff)

7/4

+

I am climbing

(.) = 248-52)

Handwritten musical score for the first system. It consists of four staves. The top staff is a vocal line with a treble clef and a 2/4 time signature. The second staff is a piano accompaniment with a grand staff (treble and bass clefs). The third staff is a guitar accompaniment with a treble clef and a 4/4 time signature. The bottom staff is a bass line with a bass clef and a 4/4 time signature. The score includes various musical notations such as notes, rests, and dynamic markings like *p*, *sf*, and *pp*. There are also some handwritten annotations like "3" and "4" indicating fingerings or measures.

Handwritten musical score for the second system. It consists of four staves. The top staff is a vocal line with a treble clef and a 4/4 time signature. The second staff is a piano accompaniment with a grand staff. The third staff is a guitar accompaniment with a treble clef and a 4/4 time signature. The bottom staff is a bass line with a bass clef and a 4/4 time signature. The score includes lyrics: "am am am am am am am am cli - cli - -ling". It features dynamic markings such as *sf* and *pp*, and includes handwritten notes like "gliss. on strings" and "b.b.o.". There are also some numerical annotations like "2" and "3" for fingerings.

Handwritten musical score for the third system. It consists of four staves. The top staff is a vocal line with a treble clef and a 4/4 time signature. The second staff is a piano accompaniment with a grand staff. The third staff is a guitar accompaniment with a treble clef and a 4/4 time signature. The bottom staff is a bass line with a bass clef and a 4/4 time signature. The score includes dynamic markings like *sf* and *pp*, and includes handwritten notes like "gliss. on strings" and "b.b.o.". There are also some numerical annotations like "2" and "3" for fingerings.

Handwritten musical score for the first system, featuring a vocal line and piano accompaniment. The vocal line includes lyrics: "ring", "ng", "ng", "ng", "ng", "e -", "3", "very", "very", "very", "where". The piano accompaniment includes dynamic markings such as *ff*, *pp*, and *sf*, along with performance instructions like "gliss." and "gliss." with a triplet of notes. The system concludes with a *sf* marking and a fermata.

Handwritten musical score for the second system, featuring a vocal line and piano accompaniment. The vocal line includes lyrics: "is is is", "I am climbing everywhere is coming up and coming up", "Co -", "ring", "ring", "ring", "ring". The piano accompaniment includes dynamic markings such as *pp* and *sf*, along with performance instructions like "whispered" and "gliss." with a triplet of notes. The system concludes with a *sf* marking and a fermata.

Handwritten musical score for the third system, featuring a piano accompaniment. The system includes a *pp* marking and a fermata. The piano accompaniment consists of a series of chords and melodic lines, with some notes highlighted in white.

(spring fjord)

♩ = ± 120

Handwritten musical score for the first system. It features a vocal line and a piano accompaniment. The vocal line starts with a rest, followed by two measures of 3/8 and 2/8, then two measures of 4/8 with lyrics "Heyo! Heyo!". The piano accompaniment includes a treble clef with a key signature of two sharps (F# and C#) and a bass clef. Dynamics include *f* and *a tempo*. The piano part has a section marked *molto rit.* and a *Sva bassa* instruction.

Lyrics: Heyo! Heyo! I was out in my kayak I was out at sea in it

molto rit.

Handwritten musical score for the second system. The vocal line continues with lyrics "I was paddling very gently in the fjord Ammassalik Hey! I was out in". The piano accompaniment includes a treble clef with a key signature of two sharps and a bass clef. Dynamics include *f* and *p*. The piano part has a section marked *molto rit.* and a *Sva bassa* instruction.

Lyrics: I was paddling very gently in the fjord Ammassalik Hey! I was out in

Handwritten musical score for the third system. The vocal line continues with lyrics "my kayak Heyo! Heyo there was ice in the water and on the water a pe-trel Heyo!". The piano accompaniment includes a treble clef with a key signature of two sharps and a bass clef. Dynamics include *f* and *p*. The piano part has a section marked *molto rit.* and a *Sva bassa* instruction.

Lyrics: my kayak Heyo! Heyo there was ice in the water and on the water a pe-trel Heyo!

molto *ritenuto*
(whisper)

(spoken)

turned his head this way that way didn't see me padd-ling, paddling

Suddenly nothing but his

a tempo
sua bassa

depress
silently

(basso)
sua bassa

tail then nothing

Heyo!

Heyo!

Hey!

sua bassa

Hey!

He plunged but not for me huge head upon the water great hairy seal

Giant head with giant eyes, moustache all shining and dripping and Heyo! Heyo! He

sva bassa

molto ritenuto
 (whisper) *f*
 seal came gently toward me
 Was it the day, the spring day, the seal playing in the sun
 depress silently
a tempo
 sva bassa
 sva bassa

f like me? like me?

Tsimshian mourning song

(♩ = ± 60) tempo rubato

voice

(spoken) *tsms* And now the words

(spoken) I'm grieving all by myself would rather be dead what's the meaning of what I'm saying

tsms

Sva bassa -----

Sva bassa -----
Ped

(spoken) I'll force the river to run upstream, one sick at heart, to do what I can't

tsms

Sva -----

⊛ Make the diminuendo by slowly closing the lips so that the *tsms* changes into a soft kind of whistling

Handwritten musical score for guitar and voice. The score is in 4/4 time and features a key signature of one sharp (F#).

Instrumental parts:

- Guitar:** Features a complex rhythmic pattern of sixteenth notes in the right hand and a bass line in the left hand. Dynamics include *ppp* (pianissimo) and *pp* (piano).
- Voice:** Enters in the second measure with the instruction *(voice)*. It features a melodic line with a *trill* and a *mf* (mezzo-forte) dynamic.

Lyrics:

little man at the corner of the sky - boasting for nothing -
I'm way down like you - why talk?

Continuation of the handwritten musical score. The guitar part continues with a steady eighth-note accompaniment.

Lyrics:

little man at the corner of the sky - boasting for nothing -
I'm way down like you - why talk?

Continuation of the handwritten musical score. The guitar part includes a triplet figure and a *mf* dynamic.

Lyrics:

this costly lament - this song
of meaning - this one

Handwritten musical score for guitar and voice. The score is written on a system of five staves. The top staff is a guitar staff with a treble clef, showing a tremolo pattern and several chords. The second staff is a vocal line with a treble clef, containing the lyrics "Sun" and various notes with slurs and ties. The third staff is a guitar staff with a treble clef, showing chords and a melodic line. The fourth staff is a guitar staff with a bass clef, showing a bass line with slurs and ties. The fifth staff is a guitar staff with a treble clef, showing a melodic line with slurs and ties. The score includes various musical notations such as slurs, ties, and dynamic markings like *mf*.

Handwritten musical score for guitar, consisting of two staves. The top staff is a guitar staff with a treble clef, showing a melodic line with slurs and ties. The bottom staff is a guitar staff with a bass clef, showing a bass line with slurs and ties. The score includes various musical notations such as slurs, ties, and dynamic markings like *p*.

(song picture no 27)

(♩ = ± 50/52)

voice

piano

pa-ny — pa — pa-ny — pa — pa pa pa pa pa

mm (warm)

tenuto

pa

8va basso ---

ten.

mm

a-a-a-a-a-mm-a

pa-ny — pa — pa-ny — pa — pa-ny — pa

pp

8va bassa ---

ten.

mm (warm)

pa

ten.

mm (warm)

a-a-a-a-a-mm-a

a mm — a

pp (mf)

8va bassa ↓

Handwritten musical score for the first system. It features a vocal line and a piano accompaniment. The vocal line starts with a dynamic marking of *pp* and *(mf)*, followed by *(ppp)*. The lyrics include "a mm", "a-o-a-o-a-o-a", "pa pa pa-y pa pa", and "a-a-a-a-mm". The piano accompaniment includes a 3/4 time signature and various rhythmic patterns. At the bottom, there are circled plus signs and the text "8va bassa ---".

Handwritten musical score for the second system. The vocal line includes lyrics: "when", "when", "the mm the wa-ter's", "pang", "calm", and "a-o-a-o-a-o-a". The piano accompaniment features complex rhythmic patterns with time signatures like 2+3+2+3 over 8, 12 over 8, 6 over 8, and 4 over 4. It includes circled plus signs and the text "8va bassa ---".

Handwritten musical score for the third system. The vocal line includes lyrics: "the frog", "pa", "the frog the frog's", "just mm just", "just mm just", and "drif-ting". The piano accompaniment includes time signatures like 5/8, 4/4, 2/4, and 4/4. It features circled plus signs and the text "(8va bassa)".

in

that's when I show up

that's when I slow up

pa pa pa pa

(8va bassa)

di - mi - nu -

that's when I show up (idem)

now'n then

pa - ny - ny

that's when I show up (idem) (idem)

(8va bassa)

- en - do

ten.

mm (warm)

(idem) (idem)

I am singing the cold rain

$\text{♩} = \pm 53-60$

FPP (a click of the tongue) whistle rit.

I am singing the cold rain - mm

pizz. *pizz.* *pizz.*

FPP (a click of the tongue) whistle rit.

I am singing the winter dawn - mm

pizz. *pizz.* *pizz.*

FPP (mf) (pp) (click of the tongue)

I am turning in the gray morning - mm - mm of my life - mm - toward home

pizz. *pizz.*

whistle *molto rit*

mp *pizz.*

Insult before gift - giving

$\text{♩} = 56-58$ ($\text{♩} = 112-116$)

voice

- x - higher than normal
- x - normal voice
- x - lower than normal

(shout) **(f)**

Man you're a liar what you say it's all lies Now the words who's a-

Aggressive and violent

paid of you, ah, snow-on-the-leaves, ah, melting away, ah, I mean where's your fun, ah,

7 ritmico
8 Psub

8 PP

8 Psub.

Ped

(shout)

you money big mouth ah

Now!

8 PP

8 PP

Ped

Handwritten musical score for the first system. It features a grand staff with treble and bass clefs. The top staff has a 2/8 time signature and includes a guitar-like notation with 'x' marks and a '7' above it. The middle staff contains vocal lines with lyrics 'cre - scen - do' and dynamic markings 'ff' and 'pp'. The bottom staff shows piano accompaniment with a 'Ped' (pedal) marking. The system concludes with a double bar line.

Handwritten musical score for the second system. It continues the grand staff notation. The vocal line includes various ornaments and slurs. The piano accompaniment features chords with accidentals (sharps and flats) and dynamic markings like 'pp' and 'ff'. The system ends with a double bar line.

Handwritten musical score for the third system. This system includes the text 'Sua bassa' written above and below the piano accompaniment. The notation continues with complex chordal textures and dynamic markings. The system concludes with a double bar line.

Handwritten musical score for guitar and bass. The score consists of two staves. The upper staff is for guitar, and the lower staff is for bass. The music is written in a complex, rhythmic style with many accidentals and dynamics. Key markings include 'Sva bassa' (repeated), 'pp' (pianissimo), 'f' (forte), and 'cre - scen' (crescendo). There are also some numerical markings like '6' and '3'.

(shouted)

Handwritten musical score featuring a vocal line and guitar accompaniment. The vocal line is written in a simple, rhythmic style with the lyrics "Man what you say it's all a crock of shit". The guitar part is written in a complex, rhythmic style with many accidentals and dynamics. Key markings include "Man", "ff" (fortissimo), "sf" (sforzando), and "smile" with a long line. There are also some numerical markings like "7" and "8".

Handwritten musical score for guitar and bass, showing a few measures of music. The notation includes various accidentals and dynamics. There are some numerical markings like "6" and "7".